

Summer 2025 Unit 1.1

1.



The pitches notated above are

- (A) A-flat, B-sharp
- (B) B-flat, C-sharp
- (C) C-flat, D-sharp
- (D) G-flat, A-sharp

2.



The pitch shown on the staff above is

- (A) E-sharp
- (B) F-sharp
- (C) G-sharp
- (D) A-sharp

Summer 2025 Unit 1.1

The following question is based on the excerpt below, which is for soprano and piano.

Andante

Andante

p legato

Oh, pa - tria

a piacere

p

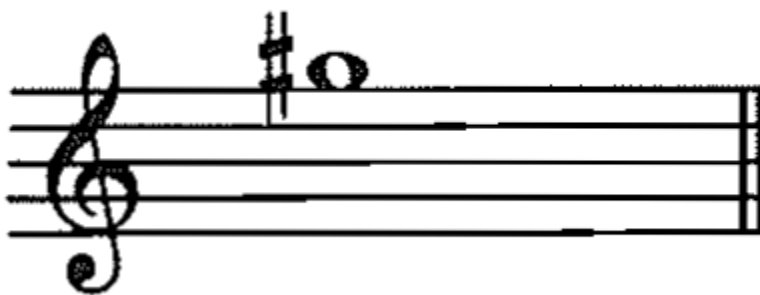
mia, mai più, mai più_ ti ri ve - drò!

Summer 2025 Unit 1.1

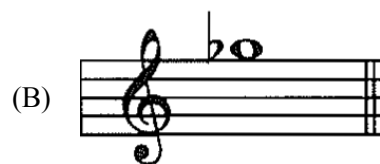
3. In measure 8, the circled pitches are

- (A) B and G
 - (B) B-flat and G
 - (C) D and B
 - (D) D and B-flat
-

4.

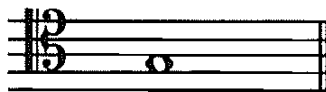


Which of the following is the enharmonic equivalent of the pitch above?



Summer 2025 Unit 1.1

5.



The note shown above is

- (A) A
- (B) B
- (C) C
- (D) G